

MS Exchange Server Backup

Automatic, reliable and secure offsite backup of MS Exchange databases

- ➔ Backup of MS Exchange databases with no downtime
- ➔ Restore individual emails, email folders or the entire mailbox store



The scenario

Emails have emerged as the primary mode of communication for business - whether it is between employees, customers, partners or stakeholders. Increasingly they contain confidential company information pertaining to sales, purchase orders, presentations, policy decisions etc. It's the first and last thing that employees check during the course of the day and even at after hours. Further, compliance to legal and regulatory mandates has made it imperative for organizations to archive and make available email communication when required.

Email outage is a perennial concern for IT managers and system administrators - whether caused by human error, natural disasters, corruption of database or hardware failure. Millions of dollars and hard earned reputation can be undone within minutes.

Is your business prepared?

Facts

Ferris Research, a San Francisco-based market and technology research firm focused on messaging and collaborative technologies in its report titled 'The Email Security Market, 2005-2010' states:

- ➔ The arithmetical average message size in the inbox of an employee is around 10 KB; the vast majority of messages are around 5 KB
- ➔ Around 10% of messages are in the 100 KB - 1 MB range. e.g. Typical Word or Excel attachment
- ➔ Around 5% are bigger than 1 MB. e.g. Large PowerPoint attachment etc
- ➔ # non-spam emails sent during 2006 by business email users: 6 trillion
- ➔ Typical # Internet emails sent and received by a business user: 600 per week

Considering the email volumes and the sensitive nature of data exchanged over it, it is important to have email systems up and running round-the-clock, in the interest of business continuity.

IBackup for MS Exchange backup and restore

IBackup ensures that all your emails are safely archived. You can restore any deleted or lost email, mailbox or the entire server. The Exchange server can be kept running during backups, for unhindered email access.

For details, visit: <http://www.ibackup.com/online-backup-exchange-server/index.html>

The IBackup advantage

Reliable

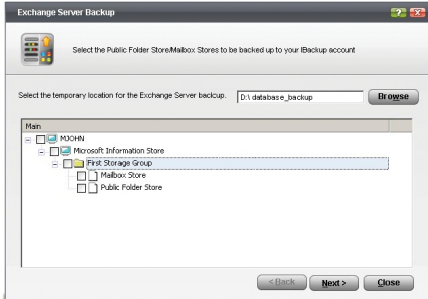
Reliable backup of running Exchange services to ensure that you don't ever lose even a single email.

Scalable and cost effective
Scalable as you add employees and servers. Reduces cost of ownership as it requires no additional hardware/software.

Efficient Support

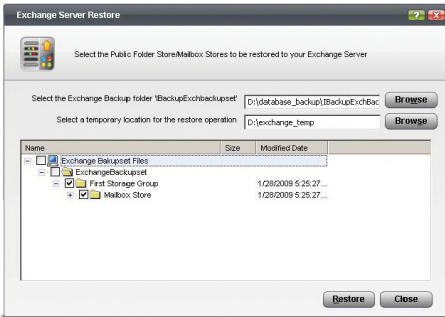
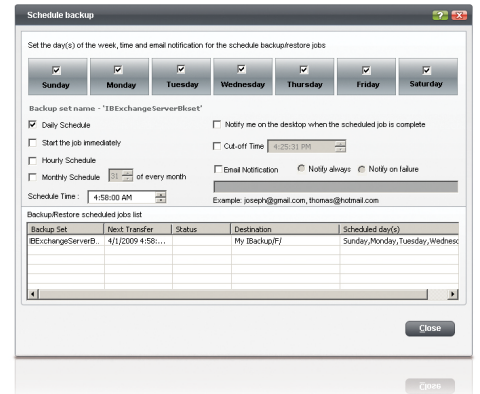
24 X 7 support over chat, email or phone.

MS Exchange Server Backup and Restore Screenshots



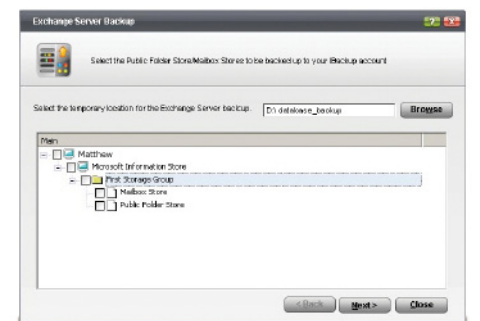
Exchange Server Backup
Choose the public folder and mailbox store for backup.

Scheduler
Set the day, time and notification options.

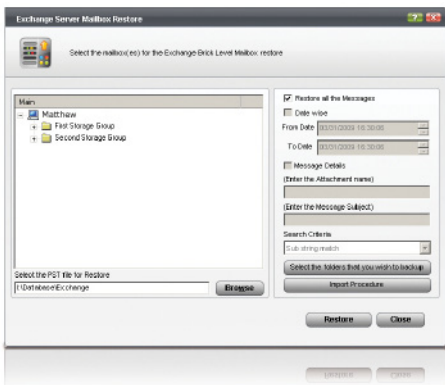


Exchange Server Restore
Select the public store / mailbox store from the Exchange Server backup folder for restore.

MS Exchange Brick Level Mailbox Backup and Restore Screenshots



Exchange Server Mail Backup
Choose the mailboxes for backup to your online account.



Exchange Server Mailbox Restore
Select the mail folder from the .pst files to restore to the Exchange Server mailbox.

Key features



Flexible

- Set and forget - your Exchange Server database is backed up automatically



Secure

- Data is secured with 256-bit AES encryption on transfer and storage with a user-defined key



Simple restore

- Restore an earlier backed up version of your database or individual emails



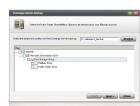
Scheduling and notification options

- Immediate server backups or options to schedule for the future
- Desktop and email notification on completion of the backup job
- View logs on the status of backup and restore jobs



Wizard driven GUI

- Backup and restore wizards that guide you step-by-step through the process



Fast backups

- Wire compression on data transfer for quick backups
- Bandwidth throttling for optimal bandwidth usage



Multiple OS support

Windows 2000, Windows 2003 and 2008 server

Support

Pro Softnet Corporation,
IBackup Division,
26115 Mureau Road, Suite A,
Calabasas, CA 91302.

Monday - Friday,
6:00 AM to 6:00 PM PST
1-800-949-3555 within USA
1-818-251-4200 outside USA

Department Extensions:

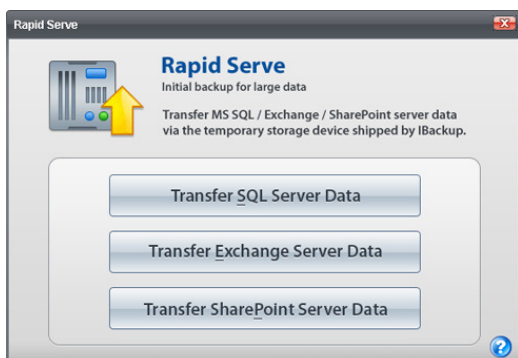
Dial 2 for Sales

Dial 3 for Technical support

Dial 4 for Billing inquiries

Fax: 1-818-878-9208

Email: publicrelations@pro-softnet.com



Rapid Serve

For quick initial backup of several gigabytes of data, IBackup provides for a physical transfer of data to a temporary storage device, shipped by IBackup to you.

To transfer your MS Exchange Server databases to the external device shipped by IBackup, use the Rapid Serve Plug-in application.

For details visit: http://www.ibackup.com/ibackup-for-windows/ibackup_snap.htm